



► Bogie Y25 Lsd1



WWW.IRI.CO.IR

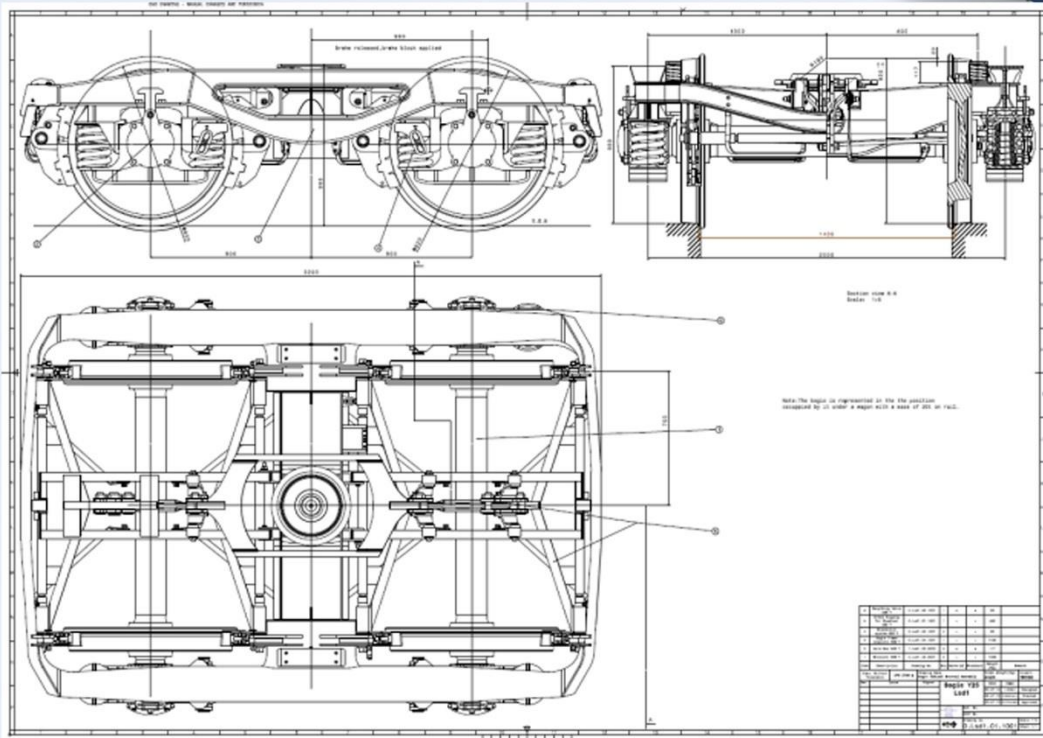
The Y25-Lsd1 is a standard UIC-ORE bogie, designed for freight wagons running with speeds of up to 120km/h, the gauge of 1,435mm and the load of 22.5t. The bogie consists of wheel set, axle box, suspension, bogie frame, bogie brake, load proportional device and etc.

The bogie frame of Y25-Lsd1 is a welded fabrication with the character of high construction speed and low unsprung mass. By adopting spherical surface pivot bearing, the contact area between the pivot bearings of bogie and car body is enlarged, the load is equably distributed, and the ability of delivering longitudinal and transversal force is strengthened, and the ability of delivering longitudinal and transversal force is strengthened. By adopting suspension of two levels stiffness, the vertical stability of tare wagon is improved, so both of the tare wagon and laden wagon are with excellent dynamic performance. By adopting Lenoir devices, the requirement for different damping force of tare and laden wagon is satisfied preferably. By adopting elastic side bearer, the hunting motion stability of bogie is improved. By adopting block brake, acts on both sides of each wheel, the brake efficiency is improved and the block wear is reduced. By adopting weight device, the automatic adjustment of brake force of tare and laden wagon situation is achieved.





► **Bogie Y25 Lsd1**



Main Performance and Dimensions	
Track gauge	1435 mm
Wheel diameter	φ920 mm
Axle journal diameter	φ130 mm
Axle journal length	191 mm
Wheelbase	1800 mm
Tare weight	approximately 4.5 tons
Max axle Load	22.5 tons
Max speed at max load 16.5 tons	120 Km/h.
Max speed at max load	22.5 tons 100 Km/h.
Brake triangle force	60 KN
Brake blocks	Bgu 2x250, cast iron GGP10
Unit deflection (spring susceptibility) depending on the load	under 6.63 t (2.45 mm/t) over 6.63 t (0.93 mm/t)

